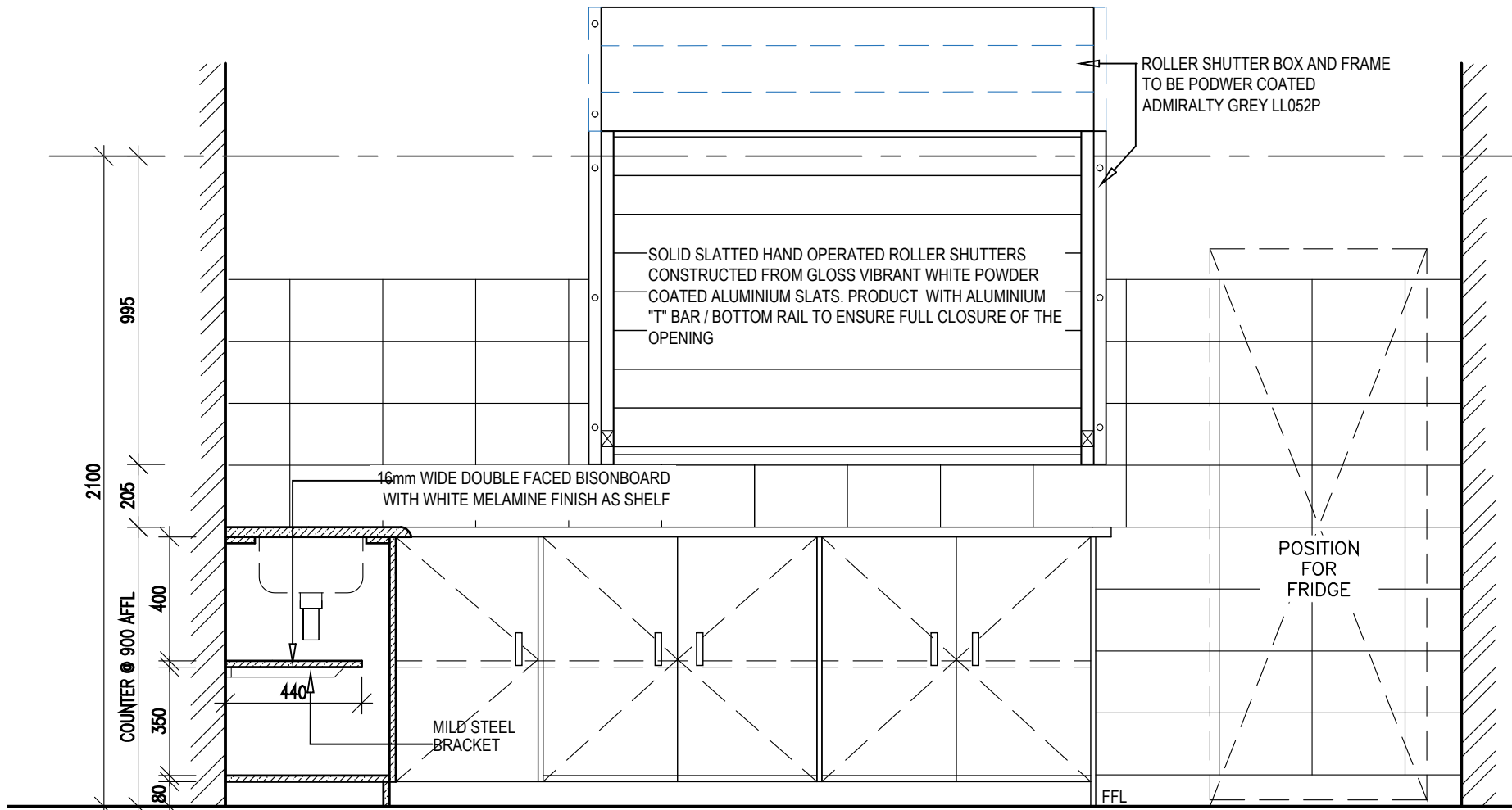


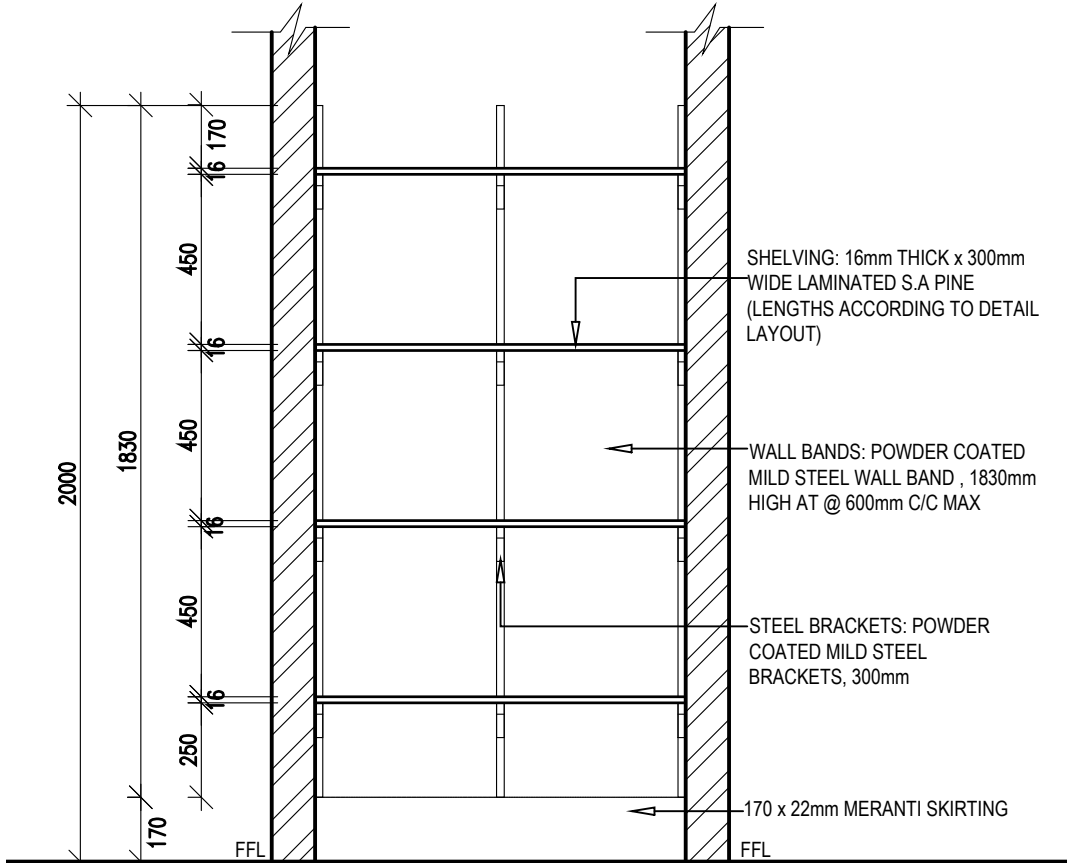
DETAIL 02.1 STAFF KITCHEN-FLOOR PLAN

SCALE 1:20



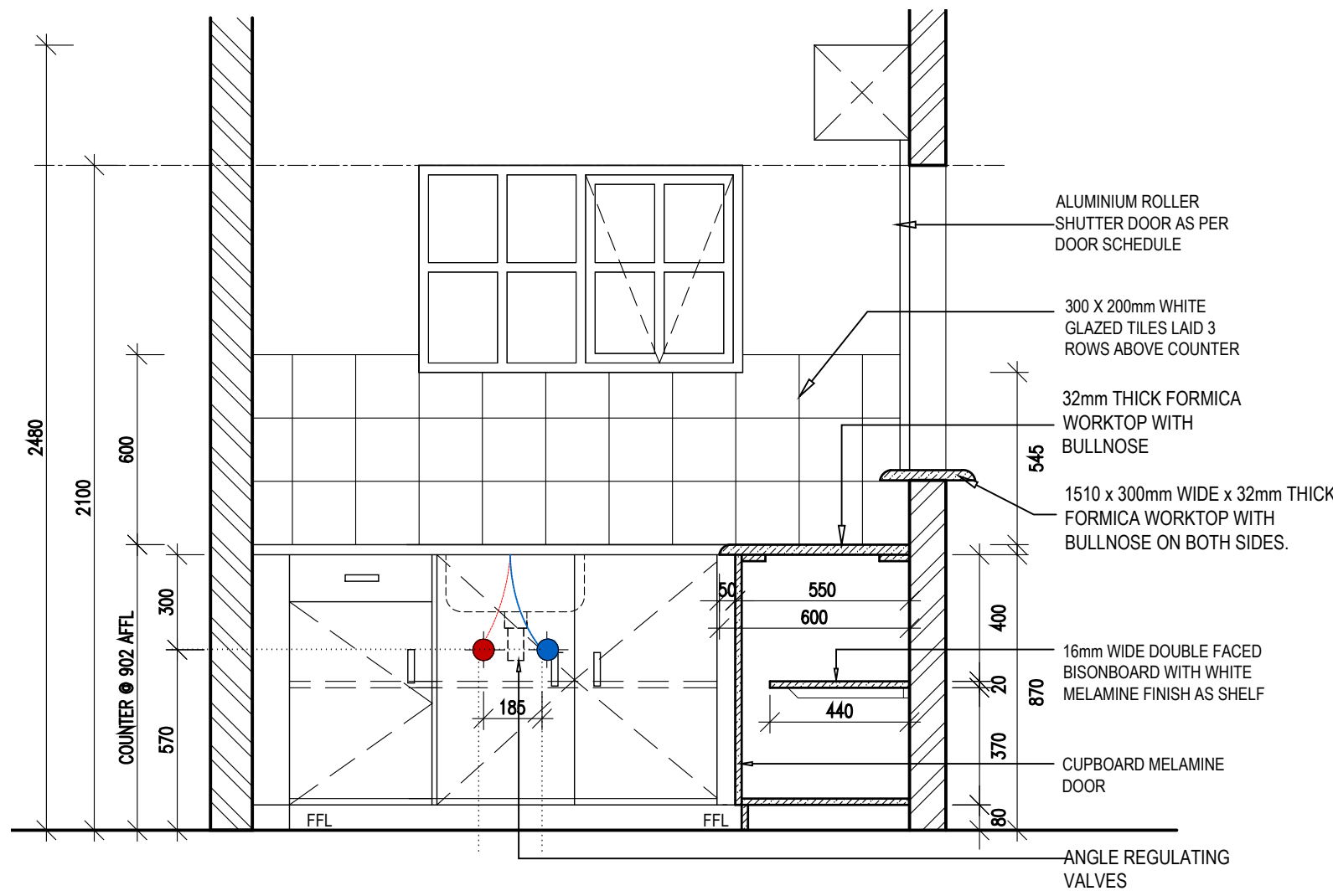
DETAIL 02.2: STAFF KITCHEN-SECTIONAL ELEVATION A

SCALE 1:20



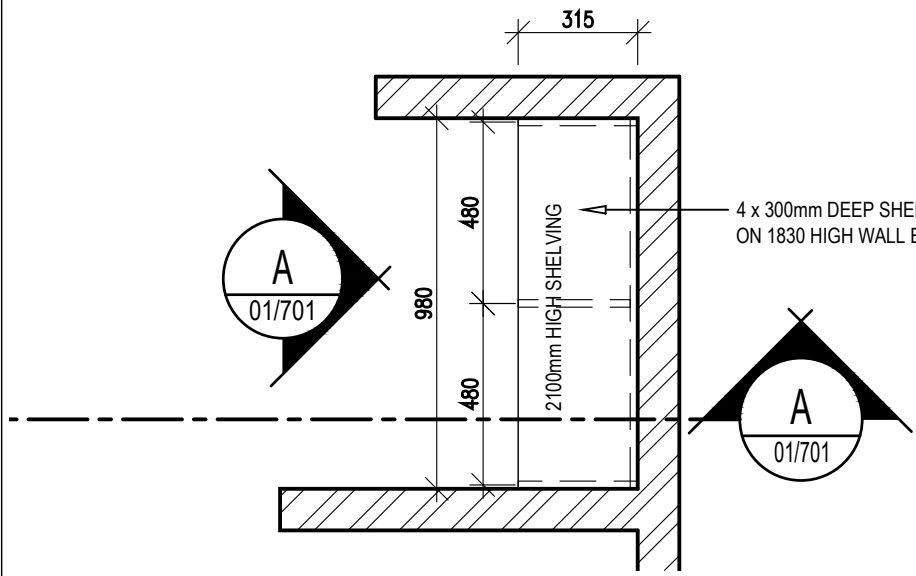
DETAIL 03.2: ENTRANCE FOYER DB CUPBOARD SHELIVING- ELEVATION A

SCALE 1:20



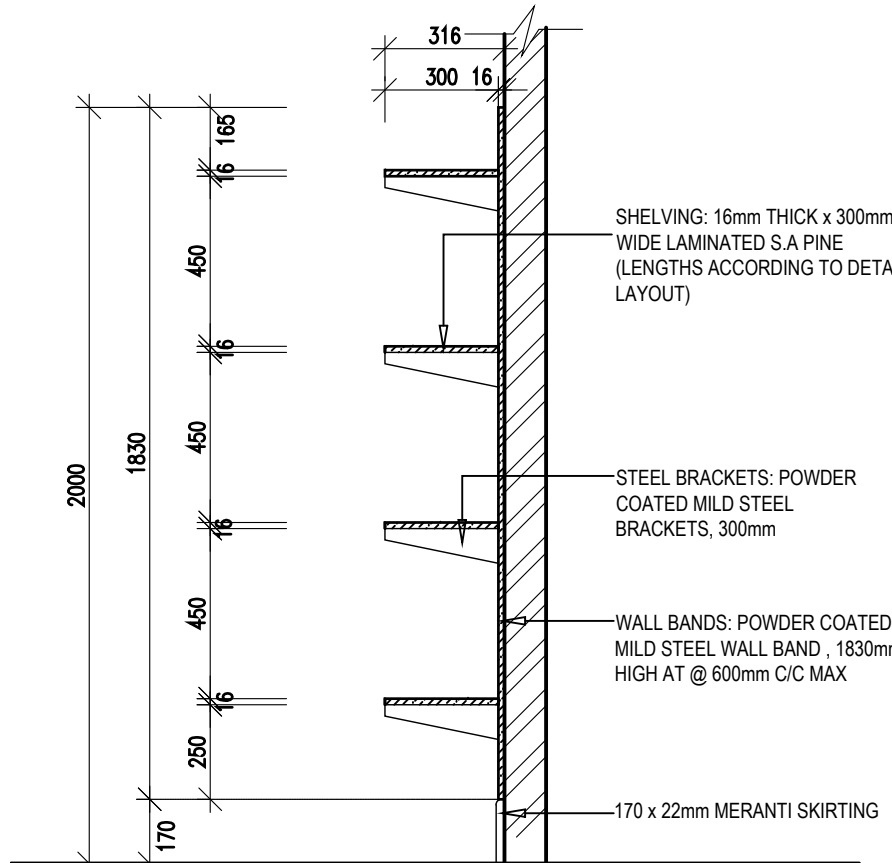
DETAIL 02.3: STAFF KITCHEN-SECTIONAL ELEVATION B

SCALE 1:20



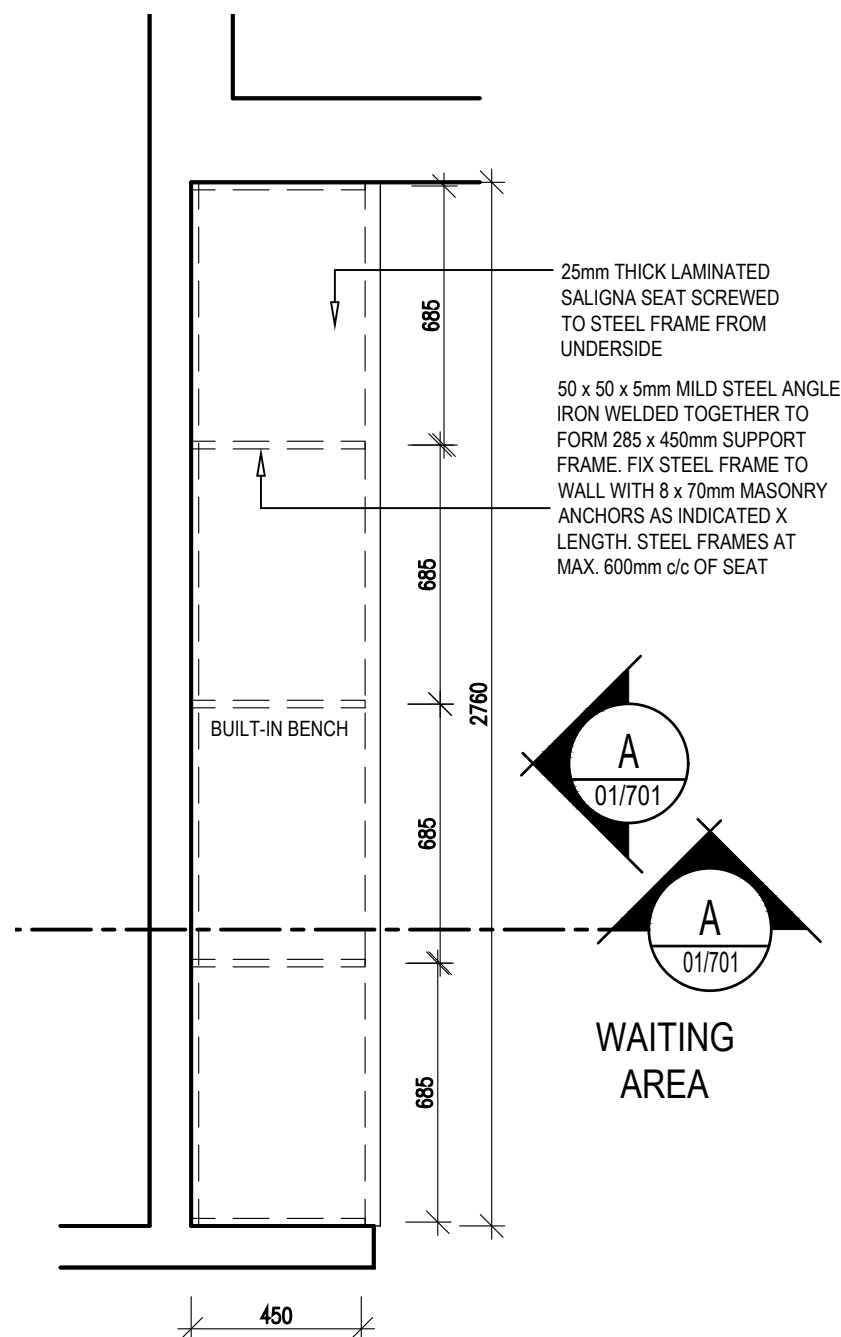
DETAIL 03.1: ENTRANCE FOYER DB CUPBOARD SHELIVING-PLAN

SCALE 1:20



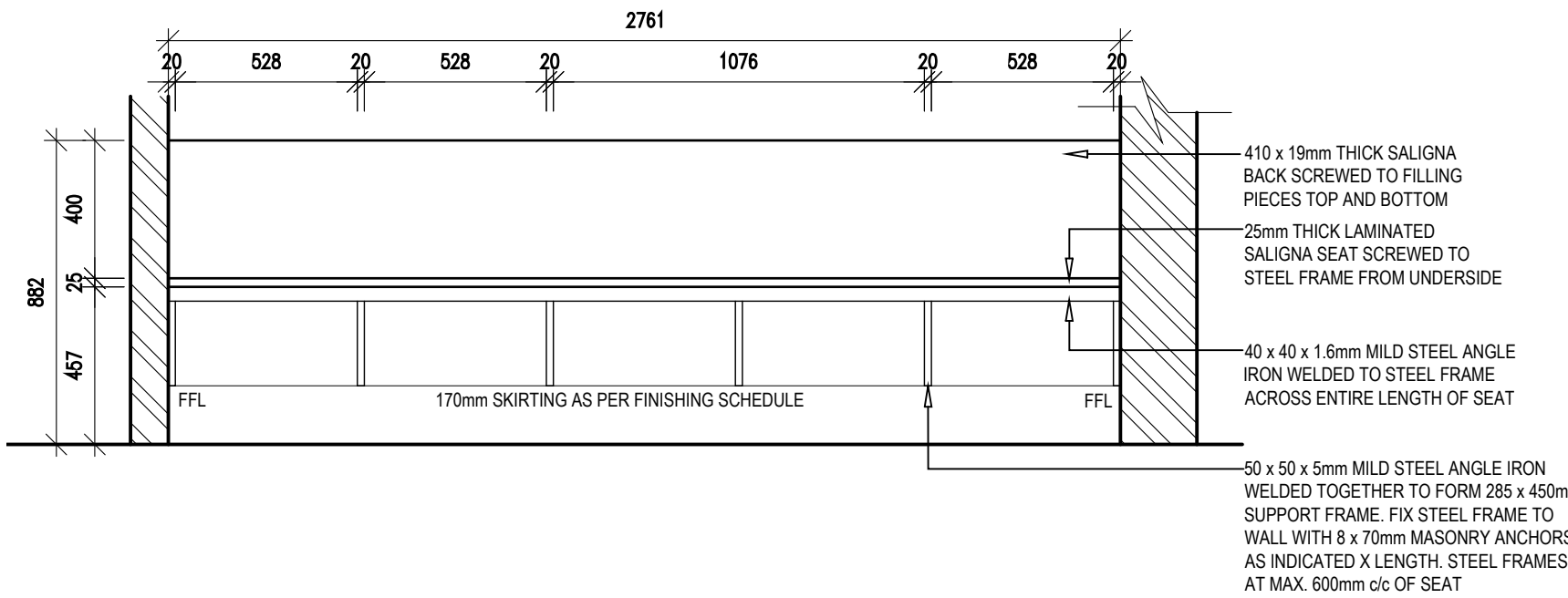
DETAIL 03.3: ENTRANCE FOYER SHELIVING- SECTION B

SCALE 1:20



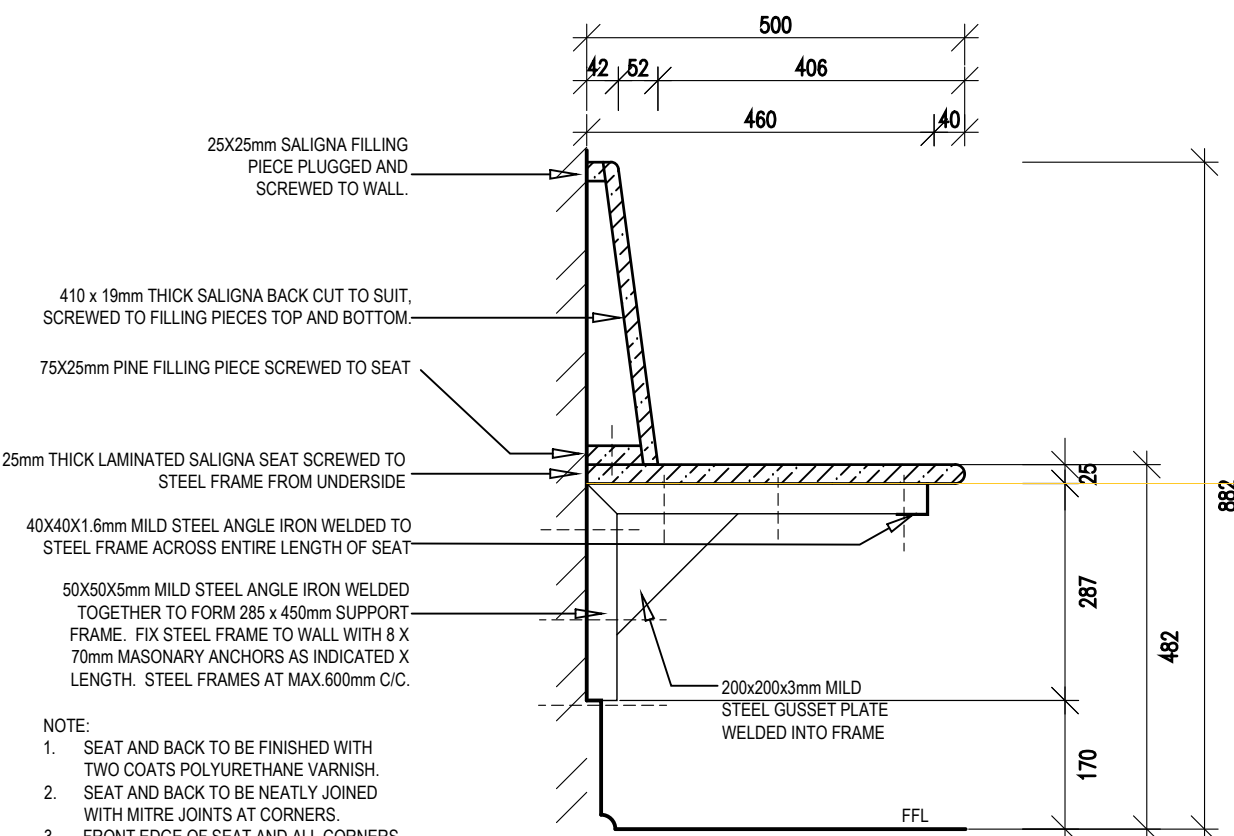
DETAIL 04.1: WAITING AREA-FLOOR PLAN

SCALE 1:20



DETAIL 04.2: WAITING AREA-ELEVATION A

SCALE 1:20



DETAIL 04.3: WAITING AREA-SECTION A

SCALE 1:10

GENERAL SPECIFICATIONS;

SHELIVING

ADJUSTABLE SHELIVING
WALL BANDS:
POWDER COATED MILD STEEL WALL BAND
HEIGHTS AS INDICATED ON PLANS @ MAX
600mm C/C
STEEL BRACKETS:
POWDER COATED MILD STEEL
BRACKETS.300mm
SHELIVING:
16mm THICK x 300mm WIDE LAMINATED S.A.
PINELENGTHS ACCORDING TO DETAIL
LAYOUT)
MODULAR STEEL SHELIVING:
STEEL SHELVES AND SLOTTED STEEL
ANGLE POSTS AND CROSS BRACES ON
SIDES

WALL AND FLOOR UNITS

CUPBOARD IRONWORKING NOTE:
CUPBOARD DOOR HINGERS - TO BE FGW
CLICK-ON 110° 15mm CRANK HINGE TO BE
SCREW FIXED (PRODUCT CODE
S1MSX55100 AS PER "RICCO" CATALOGUE
10), 1xPAIR PER DOOR
DOORS & DRAWER HANDLES - TO BE 106mm
LONG ALUMINIUM D HANDLE (PRODUCT
CODE RAH42 AS PER "RICCO" CATALOGUE
10), 1x HANDLE PER DOOR/DRAWER
DOOR LOCKS - TO BE 19x22mm MORTICE
LOCK (PRODUCT CODE VLG1736 - NICKEL).

CUPBOARD SPEC NOTE:
CUPBOARD CARCASSES TO BE 16mm
DOUBLE FACED BISONBOARD WITH WHITE
MELAMINE FINISH
CUPBOARD DOORS TO BE 16mm DOUBLE
FACED BISONBOARD WITH WHITE MELAMINE
FINISH, SQUARE EDGED WITH 3mm WHITE
PVC EDGING ALL ROUND

COUNTER TOPS TO BE 32mm THICK
FORMICA WORK TOPS
COUNTER TOPS TO HAVE 50mm HIGH
FORMICA SKIRTINGS

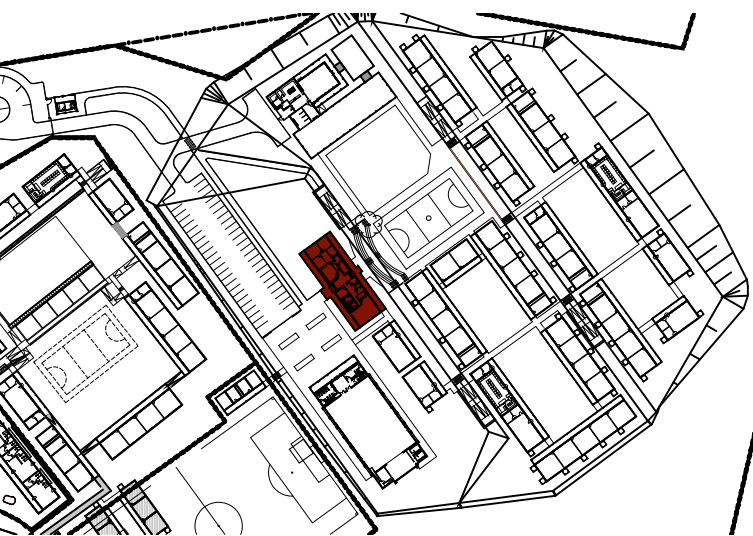
ALL SALIGNA BOARDSERS TO BE SLIGHTLY
ROUNDED, THOROUGHLY SANDED AND
VANISHED WITH 2 COATS CLEAR PLASCON
VARNISH

WORKSHOP DRAWINGS TO BE SUBMITTED
TO ARCHITECT BEFORE ANY WORK
COMMENCES.

| NO. | DATE | REVISION | DRAWN |
|-----|--------------------------|---|-----------|
| A | 2021-03-01 | ISSUED FOR INFORMATION | DW RJS |
| B | 2023-07-09 2022-04-13 | ISSUED FOR MEASURE ISSUED FOR INFORMATION (EPMS) 1. DWG NO. CHANGED FROM 1617 TO 2204 | DW |

ISSUED FOR
APPROVAL

KEY



PSP

ARCHITECT



ARCHITECTURAL PROFESSIONAL SACAP NUMBERS:

H.L. MANTEL SACAP 3045

IMPLEMENTED BY

INDEPENDENT
DEVELOPMENT
TRUST

| SIGNATURE | DATE | SHEET NO. |
|-----------|------|--|
| DESIGNED | | SCALE 1:100 |
| DRAWN | SG | STATUS LEGEND I = INFORMATION FA = FOR APPROVAL T = TENDER C = CONSTRUCTION AB = AS BUILT |
| VERIFIED | - | |
| VALIDATED | - | |

CLIENT



IMPLEMENTING
AGENT



PROJECT
DOE PORTFOLIO PROGRAMME
ESTABLISHMENT OF NEW SCHOOLS
HILLBROW - SENIOR SECONDARY SCHOOL
PROVINCE: EASTERN CAPE PROVINCE

DRAWING TITLE
ADMINISTRATION (LARGE) (BLOCK S-A)
JOINERY DETAILS PART 2 OF 5
KITCHEN, WAITING AND ENTRANCE

DRAWING DESCRIPTION
ADM1-D

| EMIS NUMBER | DISCIPLINE | DRAWING NUMBER | STATUS | REVISION |
|-------------|------------|--------------------|--------|----------|
| 200500293 | ARCH | 2204 w07-01/701 | FA | B |